

## WIND-PROOF BOOTH: WHAT TO KNOW BEFORE YOU SET UP

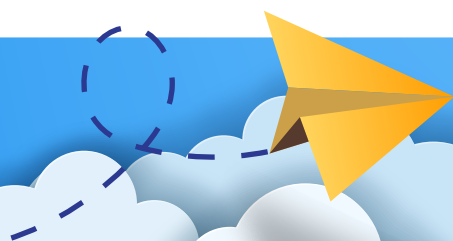
*This is a quick guide to understanding wind, risk, and how to keep your booth stable when the weather gets unpredictable.*

When the weather starts to shift and the wind picks up, even slightly, vendors need to be prepared. Wind is one of the most unpredictable challenges at outdoor markets—sometimes calm in the morning, then gusty by mid-afternoon—and even with the best forecast, Mother Nature can still surprise you. This Wind-Proof Booth Checklist is designed to help you get ahead of breezy show days and minimize potential problems before they start. It's a reminder that tents can move, signage can act like sails, and lightweight décor can quickly become airborne, especially when flags, feather banners, or large backdrops are involved. These items catch wind easily and can cause your canopy to shift or even flip, so on particularly windy days, it's best to avoid using large back banners, tall flags, and anything that creates unnecessary lift.

The guide also emphasizes the importance of having proper vendor liability insurance. Unfortunately, accidents do happen—tents have flipped, canopies have rolled into nearby displays or vehicles, and unexpected gusts have caused injuries. Insurance provides essential protection for you, your booth, and those around you, ensuring you're covered if wind causes damage or injury despite your best precautions. One year, at a major show I was vending at, a sudden microburst tore through the grounds in the middle of the night. By morning, our tent was literally lodged in a tree half a block away, and nearly all of our products had been destroyed. Just like that, our weekend was over before it even began.

With this printable, you'll have a clear, organized list of what to bring and what to do on windy days, including weights, straps, clips, repair materials, and step-by-step actions during setup. It walks you through anchoring your canopy correctly, securing displays, deciding when to remove signage, and staying aware of changing wind conditions throughout the event. These guidelines aren't guarantees—nothing in outdoor vending ever is—but they offer a solid foundation for booth safety and stability no matter the season. Whether you're preparing for a breezy holiday market or a gusty spring fair, this checklist will help keep your booth secure, your products safe, and your peace of mind intact.

***Now, flip to the next page for the ready-to-print checklist.***



# WIND-PROOF BOOTH: CHECKLIST

*What to Bring + What to Do When Setting Up on Windy Days*

## WHAT TO BRING (GEAR & SUPPLIES)

### Booth Weights & Anchors

- Four leg weights (25–40 lbs per leg minimum)
- Extra sandbags or water weights
- Ratchet straps or heavy-duty tie-downs
- Bungee cords (not for primary anchoring)
- Ground stakes (for grass setups)
- Mallet for stakes

### Signage & Display Security

- Zip ties (various sizes)
- Metal clips or heavy-duty clamps
- Extra paracord or rope
- Non-slip table mats
- Tablecloth clips or elastic fasteners
- Small weights for tabletop displays
- Locking-lid storage bins (double as weights)

### Emergency Reinforcement Kit

- Duct tape
- Repair tape for canopy tears
- Backup carabiners
- Super glue or quick-fix epoxy
- Multi-tool or pocket toolkit

### Safety & Awareness Items

- Weather app with wind alerts
- Small notebook for wind-speed logging
- Vendor liability insurance info

## WHAT TO DO (ACTIONS DURING SETUP)

### Before You Raise the Canopy

- Check ground type (grass, asphalt, gravel)
- Position the canopy evenly — avoid slanted legs
- Attach weights to all four legs before fully lifting
- Secure the windward side first (side facing the direction wind is coming from)

### While Setting Up Displays

- Test banner tension — no loose edges that can flap
- Skip backdrops or back banners on windy days
- Remove flags or tall vertical signage
- Make sure all table coverings are clipped or weighted
- Double-check that all signs are clamp-secured

### Before the Market Opens

- Do a 30-second wind scan (trees, flags, dust, leaves)
- Check your weather app for updated gusts
- Ask nearby vendors what they've heard from organizers
- Reinforce any loose or lifting areas
- Confirm your weights are stable and centered

### During the Event

- Monitor wind conditions every hour
- Re-tighten straps or clamps if needed
- Adjust displays if gusts begin to increase
- Stay aware of shifting weather — be ready to scale back
- If wind becomes hazardous, take down the canopy safely

